

WORLD'S BEST VACUUMS FOR A CLEAN AND HEALTHY HOME!



# TABLE OF CONTENTS



The SEBO Story  
and the  
Environment

**Pg. 3**



Standard  
Features of  
SEBO  
Vacuums

**Pg. 4**



SEBO's Filtration  
System, Warranty  
Coverage, and  
The Onyx Collection

**Pg. 5**



**AUTOMATIC X4  
and X4 Boost**

**Pgs. 6 & 7**



**AUTOMATIC X7  
Premium  
and X8**

**Pgs. 8 & 9**



**ESSENTIAL  
G4 and G5**

**Pgs. 10 & 11**



**300 and 350  
MECHANICAL**

**Pgs. 12 & 13**



**DART**

**Pgs. 14 & 15**



**FELIX  
Premium**

**Pgs. 16 & 17**



**DART and FELIX  
Exhaust Filter  
Textiles and  
AIRBELT Canister  
Textiles**

**Pgs. 18 & 19**



**AIRBELT  
D1 Turbo and  
D4 Premium**

**Pgs. 20 & 21**



**AIRBELT  
E1 Kombi,  
E2 Turbo, and  
E3 Premium**

**Pgs. 22 & 23**



**AIRBELT  
K2 Kombi,  
K2 Turbo, and  
K3 Premium**

**Pgs. 24 & 25**



**ET Power Heads,  
Central Vacuum  
Wand, and  
Adapter**

**Pgs. 26 & 27**



**Attachments,  
Adapters,  
and  
Mounting Clips**

**Pgs. 28 & 29**



**DISCO  
Floor  
Polisher  
Head**

**Pgs. 30 & 31**



**DUO Carpet  
and Upholstery  
Dry Cleaning  
System**

**Pgs. 32 & 33**

Suction Motor  
Brush Motor  
Belt Guarantee  
Bag Capacity  
Handle Weight  
Body Weight  
Cord Length  
Sound Level  
Other Specs

**Technical  
Specifications**

**Pgs. 34 & 35**

Thank you for considering SEBO products for your home. Come visit us at AZ Vacuums and ask for a demonstration of our various models.

## THE SEBO STORY

In 1978, two engineers founded SEBO in Velbert, Germany. Since then, SEBO has become the most important manufacturer of high-quality, commercial vacuum cleaners in the world, with sales in Europe, Asia, Africa, and North America. Millions of SEBO vacuums have been sold to hotels, hospitals, schools, and even The White House!

SEBO's first shipment into the U.S.A. marketplace was in 1979, which was for commercial-cleaning customers, followed by its DUO-P Cleaning Powder in 1984, and its household vacuums were introduced in 1997. Today, SEBO stands as a synonym for high-quality vacuums in commercial and retail markets worldwide.

## SEBO was the WORLD'S FIRST Vacuum Manufacturer to Introduce:

- An integrated suction hose on an upright vacuum.
- A timing-belt-driven brush with clutch protection.
- A dust bag that fills from the top, followed by a microfilter and then the motor.
- An electrostatic microfilter.
- An electronic brush control and safety shut off.
- A soft bumper on a canister vacuum, which protects furniture and walls from damage.
- An electronically controlled automatic height adjustment, S-class filtration, and a detail wand with telescopic hose. To this day, the most modern vacuum cleaner in the world!



## THE ENVIRONMENT

### Buy Your New Vacuum with a Green and Clean Conscience!

There is more to being environmentally aware than just looking at energy ratings . . . friends of the environment also want their new appliances to be responsibly manufactured. Everyone knows to look for efficiency when it comes to buying new appliances for the home, but what about the amount of energy consumed in their production and distribution? Sometimes, this can far exceed the energy used during the entire lifespan of a product.

Made in Germany, using locally sourced materials and components, SEBO vacuum cleaners are built to last and are manufactured in an environmentally responsible way that reduces waste and uses fewer resources. Plastic is recycled into new components, and the SEBO factory is completely self-sustaining with respect to electricity. Its combined heat and power system produces the electricity required to run the factory's machinery. The warm air and water created by the system's generators are then used to heat the factory and warehouse.

For SEBO, reducing the carbon footprint of a product starts in the initial design process. An important consideration is to ensure that products pack into the smallest possible cartons, and that carton sizes allow the maximum number of machines to fit on a pallet. Most SEBO packaging is made from unbleached, recycled cardboard, and wastepaper from the offices is shredded and re-used for packing.



Even deliveries are carefully planned, to ensure delivery trucks are running economically and are filled to capacity.

Water resources are also conserved at the SEBO factory. Rainwater is collected from the roof, then filtered and stored, to be used in production and within the factory washrooms, saving the unnecessary use of treated drinking water.

The factory and offices are designed to use natural light as much as possible, avoiding artificial lighting and the associated power consumption. And work hours are scheduled to make use of daylight hours; this also improves the working environment for employees.



# STANDARD FEATURES OF SEBO VACUUM CLEANERS

**Designed and Manufactured in Germany** – Legendary quality, reliability, and performance make SEBO vacuums the first choice of cleaning professionals throughout the world.

**World's Best Pet Vacuums** – Because of superior power-head and brush-roller technology, SEBO vacuums are the world's best for pet hair removal!



**Tightly Sealed Vacuums Ensure Effective Filtration** –

Dirty air, which flows through a vacuum, can only be filtered completely if it does not escape into the room through seams or seals in the machine. This is why all SEBO vacuums have tight seals throughout.

Many vacuum companies with high-filtration claims are actually quoting specifications made by the manufacturer of the filter material, as measured in the laboratory, not the filtration effectiveness of the vacuum itself while operating. Whether or not dirty air can escape through leaks in the body of the machine is not considered.



The filtration effectiveness of SEBO vacuums is tested while they operate.

**Reliable, Commercial-grade Components** – All SEBO vacuums are constructed with thick, reinforced, ABS plastic, aluminum and metal parts, steel axles and bearings, and high-end, quality motors. Therefore, SEBO users own reliable, long-lasting vacuum cleaners. Competing vacuums are made with thin, flimsy, inexpensive, plastic materials, none of which are reinforced and typically have useful lifespans of one or two years.



**Rubber Wheels and Soft Bumpers Protect Homes** –

Smooth-gliding, rubber wheels protect hard floors and provide exceptional maneuverability. In addition, the bumpers that surround the power heads and the soft AIRBELT bumpers that surround SEBO's canisters protect furniture, walls, and vacuum housings from incurring scuffs and scratches during use.



**Advanced, Brush-roller Technology** – SEBO's brush rollers are uniquely designed to funnel hair and debris into the power head's airflow channel, which improves vacuum cleaner performance on all flooring surfaces.



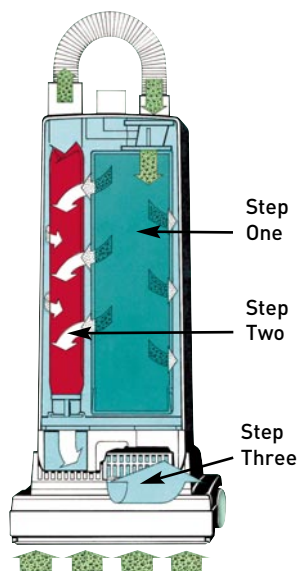
**Changing Bags is Easy and Clean** – SEBO filter bags can be changed in just a few seconds, and a hygiene cap keeps dust sealed inside during removal and disposal.

**Save Money! SEBO Vacuums Last for Years and Extend Carpet Life!** – If properly maintained, SEBO vacuums save ordinary, residential users hundreds of dollars, by providing excellent performance for ten to fifteen years or more, and their deep-cleaning, power-brush technology extends the life of carpets. Typical vacuums perform poorly, even when new, and usually do not last beyond two years. So, six or seven "disposable vacuums" must be purchased during the average life expectancy of just one SEBO machine.



# SEBO's FILTRATION SYSTEM

**Bagged vs. Bagless . . . Bags are Better!** – Top-fill, three-layer AeraPure™ bags are an integral part of SEBO's filtration system because they hold virtually all the dirt captured by the vacuum, which improves the effectiveness and useful life of the microfilters. They also ensure continuously strong suction because dirt enters from the top, deposits at the bottom, accumulates upward, and air exits through the sides, which allows unimpeded airflow as they fill to capacity. And they can be tightly sealed with a hygiene cap when full, so no dust can escape into the air during bag removal and disposal.



In contrast, without bags to hold nearly all the captured dirt, the microfilters on bagless vacuums quickly clog from excessive dirt build-up and must be replaced often, or a loss of suction and cleaning effectiveness will occur. In addition, dust and other allergens become airborne when emptying bagless dirt containers. Lastly, bagless vacuum microfilters are expensive, usually costing more than a multi-year supply of SEBO filter bags.

## SEBO vacuums offer the following types of filtration configurations:

**S-class, Pre-motor and/or Exhaust Microfilters** – S-class, Pre-motor and Exhaust Microfilters (S = "Schwebstoff" = airborne particles) are made from electrostatically charged, micro-fiber material, which attracts and captures dust particles from the airflow of the vacuum before and after it passes over the motor to cool it. Cooling the motor with super-clean air increases motor life and reduces the possibility of maintenance, even after many years of use. Also, the exhaust air is cleaned to the highest level before being emitted from the machine. The S-class Standard requires filters to absorb greater than 99.9% of particles down to 0.3 microns in diameter. For comparison, 100 microns is the diameter of a human hair. Their advantages are a relatively open texture that allows smoother airflow for better suction performance, a longer life expectancy, and they cost less than HEPA filters.

**HEPA, Pre-motor and/or Exhaust Microfilters (Optional)** – HEPA Microfilters ("High Efficiency Particulate Air") remove a minimum of 99.97% of all airborne particulate matter down to 0.3 microns in diameter. Because these filters use small, grid-like structures to capture dust particles, dirt build-up clogs the airflow pathway sooner than what is expected from S-class microfilters. However, SEBO's HEPA microfilters are sold along with three-layer AeraPure™ bags, which provide highly effective filtration before the airflow goes through the HEPA microfilter, greatly increasing life expectancy and reducing the potential of diminished air flow.



Call us today at (602) 439-2751 and ask about our specials and current promotions for any SEBO model.

We will be happy to answer any questions, and invite you to stop by our showroom and try the vacuums yourself.



**PLEASE NOTE:** The FREE WARRANTY BONUS does NOT apply to SEBO vacuum cleaners purchased from "Third-party Websites," such as [Amazon](https://www.amazon.com) and [Walmart.com](https://www.walmart.com), because they have many **UNAUTHORIZED SELLERS** with false, hidden, or disguised identities, which means they have no access to genuine replacement parts, factory-trained technicians, and labor-cost reimbursements!



# AUTOMATIC X4 and X4 Boost

AUTOMATIC X models are the most technically advanced and uniquely easy-to-use vacuum cleaners in the world! The X4 and X4 Boost feature 12-inch power heads and truly automatic height adjustment! An electronic controller measures the resistance of the spinning brush roller against the floor surface and then signals up or down adjustments, to ensure optimal performance on both carpets and hard floors. The user is also alerted to clogs, a worn brush, or a full bag, and the vacuum automatically shuts off when brush obstructions occur to protect the motor and belts from damage. SEBO's X also has an instant-use cleaning wand and suction hose, a lifetime belt warranty, tool-free brush roller removal, a 40-foot power cord, three on-board attachments, and excellent pet hair removal.

The X4 Boost model differs from the regular AUTOMATIC X4 because it offers a choice between two modes of brush roller aggressiveness! The default setting is perfect for most flooring types, but by pressing the Boost Button located on the power head, the spinning brush roller is allowed to attain greater resistance against the floor surface before upward height adjustments are made, which causes deeper brush action on carpets and rugs. For users who like automatic height adjustment but may want more aggressive brush agitation from time to time, the X4 Boost is the solution!

AUTOMATIC X4  
Black  
#9501AM

Available  
In-store Only

The **ONYX**  
Collection

**FREE**  
Warranty Bonus  
Included



Optional  
Value Pack  
Attachments



Three On-board Tools  
are Included with All  
AUTOMATIC X models.



AUTOMATIC X4 Boost  
Red  
#90505AM



**Low, 5.5-inch Profile** – Lower the handle flat to the floor to clean under beds or lower it to the intermediate stop position to maneuver over rugs. Depress the foot pedal again to bypass the intermediate stop position, or close this position by moving the orange, handle-position slider to the right.



**Instant-use Wand and Suction Hose** – The integrated, instant-use wand and suction hose are always ready. Just pull out either tool to clean hard-to-reach corners, edges, and crevices. The wand and hose together have an eight-foot reach. The suction hose is ideal for cleaning furniture. And an optional nine-foot extension hose is available, which creates a total hose length of 15 feet . . . perfect for cleaning stairs. Choose from a range of optional attachments that can be fitted to the wand or hose!

**Three-step Filtration** – It features an S-class pre-motor microfilter, a three-layer AeraPure™ bag, an exhaust filter, and a tightly sealed casing, which prevents dirty air from escaping through its seams.

AUTOMATIC X4 Boost  
White  
#90506AM

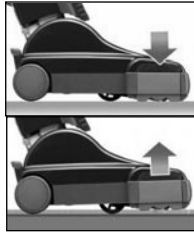


AUTOMATIC X4  
White  
#9570AM



**Automatic Height Adjustment: From Hard Floors to Carpets –**

The electronic controller adjusts the power head up or down to the appropriate brush height, providing optimal cleaning of both carpets and hard floors. The “sealing strip,” located behind the brush, improves hard floor performance by channeling the airflow upward and preventing debris kickback.



**Brush Adjustment Indicator Lights –** Two green lights, one for “up” and one for “down,” illuminate to indicate when the power head is adjusting the brush height to the proper cleaning level. Optimal cleaning effectiveness occurs when both lights are off.



**Brush Obstruction Light with Automatic Shut Off –** If an obstruction jams the brush roller, the red “check brush” warning light flashes quickly, the brush roller immediately stops spinning, and the vacuum shuts off. This feature prevents the belts from breaking and protects the motor and carpet from damage.



**Worn Brush Light. Easy Brush Removal and Cleaning –** When the brush roller’s bristles are worn to a point that brush agitation is less effective, the red “check brush” warning light remains illuminated during use. (The vacuum continues to operate; it will not automatically shut off.) When needed, installing a new brush roller or cleaning hair or other debris from a used brush is quick and easy, and no tools are required!



**Stationary Use Light –** When the vacuum is stationary in its upright, handle-locked position, the power head adjusts upward to the height necessary (or to its highest possible level) to disengage the spinning brush roller from the floor. However, if the brush remains in contact with carpet fibers, despite the power head’s upward adjustment, the red “check brush” warning light flashes to alert the user to avoid potential carpet marking from excessive use time in a stationary position. Usually, very high-pile carpets cause this situation, or the vacuum is tilted forward, toward the brush roller, while using the cleaning wand and/or hose. The solution is to tilt the locked, upright handle backward, such that the brush is raised above the carpet pile.

**Full Bag or Clog Light with Automatic Shut Off –** When a full bag, a clog in the airflow pathway, or an excessively dirty microfilter is detected, the red “bag full or clog” warning light illuminates, and the vacuum automatically shuts off after 30 seconds. This feature prevents overheating and motor damage from a lack of adequate airflow.

**Combination Carrying Handle with Rotating Cord Hook –** It’s easy to carry the vacuum or quickly unwind the cord, using its unique handle with integrated, rotating cord hook.



**Three On-board, Full-size Tools. Large Filter Bag –** The vacuum includes a crevice tool, dusting brush, upholstery nozzle, and a large 1.4-gallon filter bag. Also, many optional accessories are available.

**Lifetime Belt Warranty –** The AUTOMATIC X’s heavy-duty, geared belts should last the life of the machine!

**Forty-foot Cord –** A 40-foot power cord saves time, by reducing the number of electrical outlet changes needed during use.

**One-sided Edge Cleaning –** The AUTOMATIC X4 is 12 inches wide, with a cleaning path of 10.5 inches and one-sided edge cleaning.

**Protective, Rubber-coated Wheels –** Its wheels protect all floor surfaces and provide smooth maneuverability.

**Easy Maintenance –** The clog removal door, replaceable brush roller, and “sealing strip” are easy to access.



**Soft-start Feature –** The vacuum’s gradual power-up extends motor life.

Included AUTOMATIC X4 and X4 Boost			
Crevice Nozzle #1092GS	Dusting Brush with Horsehair Bristles #1387GS	Upholstery Nozzle #1491GS	
Color Exceptions: X4 Black - Crevice Nozzle #1092SW & Upholstery Nozzle #1491SW			
Optional Three-piece Kit			
9' 2' Extension Hose* #1495AM	Parquet Brush* #1359GS	22' Extension Wand* #1084GS	
*All three items are available individually or as a three-piece attachment kit, #1991AM.			
24' Crevice Nozzle #1093JV			
Additional Options			
Radiator Brush #1496GS	Flat Upholstery Nozzle #1090HG	Wall and Floor Brush #1325GS	Hand-held Turbo Brush #6179ER
Dusting Brush, Nylon Bristles #1329GS	Dusting Brush, Large Opening #1094GS		
Bags, Filters, Accessories and Wear Items			
8 AeraPure™ Bags** #5093AM	Pre-motor S-class Microfilter** #5036AM	Exhaust Filter** #5143	Service Box #5828AM
Pre-motor Anti-odor Microfilter #5425AM	Pre-motor HEPA Microfilter #5812ER	Sealing Strip** 12' #5400-1	
HEPA Service Box #5827AM	HEPA Service Box contains 8 Bags, an Exhaust Filter, and a Pre-motor HEPA Microfilter	SEBO FRESH 1 Pkg. of 5 #0496AM	
12' Brush Roller #5010AM	12' Brush Roller (Soft Bristle) #5010GE		
**All four items are also available as a Service Box containing 8 Bags, an Exhaust Filter, a Pre-motor Microfilter, and a Sealing Strip.			



# AUTOMATIC X7 Premium, X7 Premium PET, and X8

AUTOMATIC X models are the most technically advanced and uniquely easy-to-use vacuum cleaners in the world! Available in two power head widths, the 12-inch X7 and 15-inch X8 feature truly automatic height adjustment, an LED headlight, and an extra layer of micro-filtration. An electronic controller measures the resistance of the spinning brush roller against the floor surface and then signals up or down adjustments, to ensure optimal performance on both carpets and hard floors. The user is alerted to clogs, a worn brush, or a full bag, and the vacuum automatically shuts off when brush obstructions occur. The X7 and X8 also have an instant-use cleaning wand and suction hose, a lifetime belt warranty, tool-free brush roller removal, a 40-foot power cord, three on-board attachments, and excellent pet hair removal.

The three X7 Premium models also offer the user a choice between two modes of brush roller aggressiveness! The default setting is perfect for most flooring types, but by pressing the Brush-mode Button located on the power head, the spinning brush roller is allowed to attain greater resistance against the floor surface before upward height adjustments are made, which causes deeper brush action on carpets and rugs. However, the X8 does not have a Brush-mode Button. The X7 Premium PET also includes a turbo brush, a nine-foot extension hose, and a microfilter that absorbs pet odors.

AUTOMATIC X7  
Premium PET  
Black  
#91540AM

Available  
In-store Only

The **ONYX**  
Collection

**FREE**  
Warranty Bonus  
Included



**EXTRA**  
Attachments  
are Included



Three On-board Tools  
are Included with All  
AUTOMATIC X models.



AUTOMATIC X8  
Dark Blue  
#91566AM

AUTOMATIC X7  
Premium  
White  
#91542AM

AUTOMATIC X7  
Premium  
Graphite  
#91543AM



### Three On-board, Full-size Tools. Large Filter Bag –

The vacuum comes standard with a crevice nozzle, dusting brush, upholstery nozzle, and a large 1.4-gallon filter bag. Also, many optional accessories are available.

**Three-step Filtration** – It features an S-class pre-motor microfilter, a three-layer AeraPure™ bag, and an exhaust microfilter, all in a tightly sealed casing that prevents dirty air from escaping through its seams.

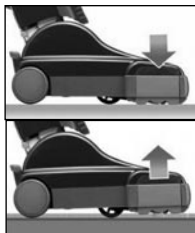
**Low, 6-inch Profile** – Its low, flat-to-the-floor profile makes cleaning under furniture easy!

**Instant-use Wand and Suction Hose** – The integrated, instant-use wand and suction hose are always ready. Just pull out either tool, or both together, to clean hard-to-reach corners, edges, and crevices. The wand and hose together have an eight-foot reach. The suction hose is ideal for cleaning furniture. And an optional nine-foot extension hose is available, which creates a total hose length of 15 feet . . . perfect for cleaning stairs. Choose from a range of optional attachments that can be fitted to the wand or hose!

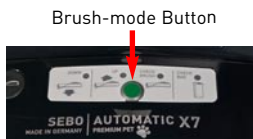
**Soft-start Feature** – The vacuum's gradual power-up capability extends motor life.

**Automatic Height Adjustment: From Hard Floors to Carpets –**

The electronic controller adjusts the power head up or down to the appropriate brush height, providing optimal cleaning of both carpets and hard floors. The “sealing strip,” located behind the brush roller, improves hard floor cleaning performance by channeling the airflow and preventing debris kickback.



**Two Modes of Automatic Brush Agitation –** Only the X7 Premium model offers a choice between two modes of automatic brush agitation! The default setting is perfect for most flooring types, but more aggressive and deeper brush action can be activated by pressing the Brush-mode Button.



**Brush Adjustment Indicator Lights –** Two green lights, one for “up” and one for “down,” illuminate to indicate when the power head is adjusting the brush height to the proper cleaning level. Optimal cleaning effectiveness occurs when both lights are off.

**Stationary Use Light –** When the vacuum is stationary in its upright, handle-locked position, the power head adjusts upward to the height necessary (or to its highest possible level) to disengage the spinning brush roller from the floor. However, if the brush remains in contact with carpet fibers, despite the power head’s upward adjustment, the red “check brush” warning light flashes to alert the user to avoid excessive use time in a stationary position.

**Full Bag or Clog Light with Automatic Shut Off –** When a full bag, a clog in the airflow pathway, or an excessively dirty microfilter is detected, the red “bag full or clog” warning light remains illuminated, and the vacuum automatically shuts off after 30 seconds to avoid motor damage from a lack of airflow.

**Brush Obstruction Light with Automatic Shut Off –** If an obstruction jams the brush roller, the red “check brush” warning light flashes quickly, the brush roller immediately stops spinning, and the vacuum shuts off. This feature prevents the belts from breaking and protects the motor and carpet from damage.



**Worn Brush Light. Easy Brush Roller Removal and Cleaning –** When the brush roller’s bristles are worn to a point that brush agitation is less effective, the red “check brush” warning light remains illuminated during use. Installing a new brush roller or just removing accumulated hair is quick and easy, and no tools are required!



**Easy Maintenance –** The clog removal door is easy to access, and its brush roller and “sealing strip” are easy to replace.

**Lifetime Belt Warranty –** Stop changing vacuum belts! With an AUTOMATIC X, its heavy-duty, geared belts should last the life of the machine!

**LED Headlight –** The AUTOMATIC X7 Premium and X8 models are both equipped with a headlight to illuminate cleaning surfaces in low-light conditions.

**Forty-foot Cord –** Its 40-foot cord saves time, by reducing the number of electrical outlet changes needed during use.

**Foot Pedal Stress Release –** When it’s in the upright, handle-locked position, the pedal relieves potentially damaging force against the bag housing by unlocking the handle.

**Two Power Head Widths. One or Two-sided Edge Cleaning –** All AUTOMATIC X7 models are 12 inches wide with a cleaning path of 10.5 inches and one-sided edge cleaning. The AUTOMATIC X8 is 15 inches wide with a cleaning path of 14.5 inches and two-sided edge cleaning.

**Protective, Rubber-coated Wheels –** Its wheels protect all floor surfaces and provide smooth maneuverability.

**Combination Carrying Handle with Rotating Cord Hook –** It’s easy to carry the vacuum or quickly unwind its cord.

Attachments			
Included X7 Premium, X7 Premium PET, and X8	Upholstery Nozzle #1491GS or #1491SW	Also Included with X7 Premium PET	Hand-held Turbo Brush #6179ER
	Crevice Nozzle #1092GS		9” 2” Extension Hose #1495AM
	Dusting Brush #1387GS		Pre-motor Anti-odor Microfilter #5425AM
Color Exceptions: X7 Premium PET, Black - Crevice Tool #1092SW and Upholstery Nozzle #1491SW			
Optional Three-piece Kit	9” 2” Extension Hose* #1495AM	Parquet Brush* #1359GS	22” Extension Wand* #1084GS
	*All three items are available individually or as a three-piece attachment kit, #1991AM.		
Additional Options	Radiator Brush #1496GS	Flat Upholstery Nozzle #1090HG	Wall and Floor Brush #1325GS
	Dusting Brush, Nylon Bristles #1329GS		Hand-held Turbo Brush #6179ER
<b>Additional Options:</b> Dusting Brush, Large Opening #1094GS			
Bags, Filters, Accessories and Wear Items			
8 AeraPure™ Bags** #5093AM	Pre-motor S-class Microfilter** #5036AM	Sealing Strip** 12” #5400-1 15” #5400-2	Service Box #51828AM
HEPA Service Box #51829AM	HEPA Service Box contains 8 Bags, an Exhaust Microfilter, and a Pre-motor HEPA Microfilter	Exhaust Microfilter** #52038AM	**All four items are also available as a Service Box containing 8 Bags, a Pre-motor Microfilter, and a Sealing Strip.
HEPA Pre-motor Microfilter #5812ER	12” Brush Roller #5010AM (Soft Bristle) #5010GE	15” Brush Roller Set #5290AM (Soft Bristle) #5290GE	SEBO FRESH 1 Pkg. of 5 #0496AM

# ESSENTIAL G4 and G5

The sturdy ESSENTIAL G is a powerful, technically advanced, upright vacuum cleaner that will provide years of reliable use! It has four-level, manual brush height adjustment and comes in two power-head widths: the 12-inch G4 and the 15-inch G5. They clean carpets and hard floors and have excellent pet-hair removal. The G series also features an electronic controller that acts as a brain, alerting the user to a worn brush, or when brush height is set too high for optimal cleaning. It even shuts off automatically when a full bag, a clog, or a brush-roller obstruction occurs, which protects the motor, belts, and carpet from damage. They also have an instant-use cleaning wand and suction hose, an exterior housing with a scratch and scuff-resistant matte finish, tool-free brush roller removal, a 40-foot power cord, three on-board attachments, and protective rubber-coated wheels.

ESSENTIAL G4  
Gray  
#90406AM



ESSENTIAL G5  
Gray  
#90407AM



**Instant-use Wand and Suction Hose** – The integrated, instant-use wand and suction hose are always ready. Just pull out either tool to clean hard-to-reach corners, edges, and crevices. The wand and hose together have an eight-foot reach. The suction hose is ideal for cleaning furniture. And an optional nine-foot extension hose is available, which creates a total hose length of 15 feet . . . perfect for cleaning stairs. Choose from a range of optional attachments that can be fitted to the wand or hose!

**Low, 5.5-inch Profile** – Lower the handle flat to the floor to clean under beds or lower it to the intermediate stop position to maneuver over rugs. Depress the foot pedal again to bypass the intermediate stop position, or close this position by moving the orange, handle-position slider to the right.



**Three-step Filtration** – It features an S-class pre-motor microfilter, a three-layer AeraPure™ bag, an exhaust filter, and a tightly sealed casing, which prevents dirty air from escaping through its seams.





**Four-level, Manual Brush Height Adjustment** – The brush height can be manually adjusted up or down for optimal cleaning effectiveness.

**Brush Obstruction Light with Automatic Shut Off** – If an obstruction jams the brush roller, the red “check brush” warning light flashes quickly, the brush roller immediately stops spinning, and the vacuum shuts off. This feature prevents the belts from breaking and protects the motor and carpet from damage.



**Incorrect Height Setting or Worn Brush Light** – When brush height is set too high for optimal cleaning, or when the brush roller should be replaced due to reaching maximum bristle wear, the red “check brush” warning light remains illuminated during use. (The vacuum will not automatically shut off.) The light shuts off when the condition is corrected, ensuring consistently effective brush agitation of the carpet pile.

**Easy Brush Removal and Cleaning** – Cleaning hair or other debris from the brush roller, or replacing it when its bristles are worn, is quick and easy, and no tools are required! This feature ensures consistently effective brush agitation of the carpet pile.



**Full Bag or Clog Light with Automatic Shut Off** – When a full bag, a clog in the airflow pathway, or an excessively dirty microfilter is detected, the red “bag full or clog” warning light illuminates, the machine automatically shuts off after 60 seconds, and then the warning light starts continuously flashing. This feature prevents overheating and motor damage from a lack of adequate airflow.



**Soft-start Feature** – The vacuum’s gradual power-up capability extends motor life.

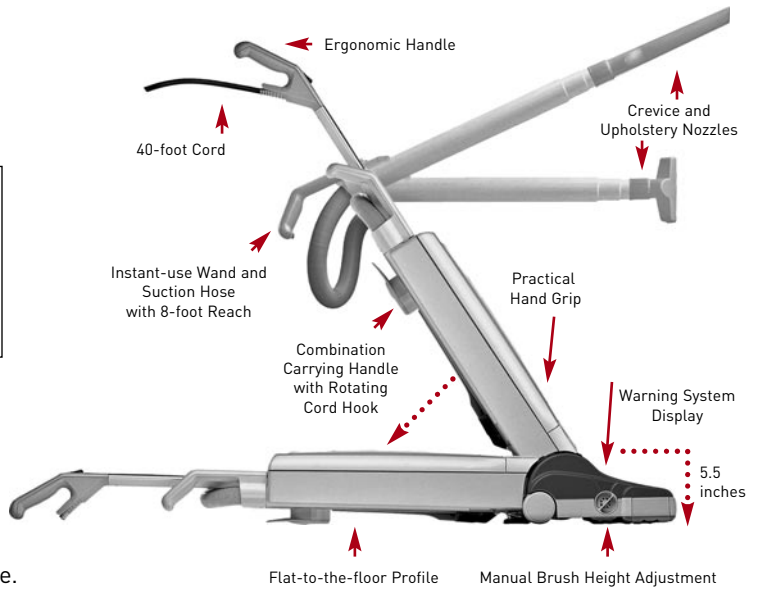
**Durable Matte Finish** – The ESSENTIAL G has an exterior housing with a special matte finish that is extra scratch and scuff-resistant, so it looks great even after years of use.

**Combination Carrying Handle with Rotating Cord Hook** – The vacuum is easy to carry or quickly unwind the cord, using its unique handle with integrated, rotating cord hook.

**Three On-board, Full-size Tools. Large Filter Bag** – The G machine includes a crevice tool, dusting brush, upholstery nozzle, and a large 1.4-gallon filter bag. Also, many optional accessories are available.

**Two Power Head Widths with One-sided Edge Cleaning** – The ESSENTIAL G4 is 12 inches wide with a 10.5-inch cleaning path. The ESSENTIAL G5 is 15 inches wide with a 13.25-inch cleaning path. Both heads have one-sided edge cleaning.

**Durable, Heavy-duty Belts** – The reinforced, geared belts do not slip or stretch, resulting in a more efficient use of power, and they should last the life of the machine.



**Forty-foot Cord** – A 40-foot power cord saves time, by reducing the number of electrical outlet changes needed during use.

**Protective, Rubber-coated Wheels** – Its wheels protect all floor surfaces and provide smooth maneuverability.



**Easy Maintenance** – The ESSENTIAL G’s clog removal door and replaceable brush roller are easy to access.

	Attachments		
Included ESSENTIAL G4 and G5	Crevice Nozzle #1092JE	Dusting Brush with Horsehair Bristles #1387GS	Upholstery Nozzle #1491JE
Optional Three-piece Kit	9' 2" Extension Hose* #1495AM	Parquet Brush* #1359GS	22" Extension Wand* #1084GS
	*All three items are available individually or as a three-piece attachment kit, #1991AM.		
Additional Options	Radiator Brush #1496GS	Flat Upholstery Nozzle #1090HG	Wall and Floor Brush #1325GS
	Hand-held Turbo Brush #6179ER	Dusting Brush, Nylon Bristles #1329GS	Dusting Brush, Large Opening #1094GS
	24" Crevice Nozzle #1093JV		
Bags, Filters, Accessories and Wear Items			
8 AeraPure™ Bags #5093AM	Exhaust Filter #2846	Pre-motor S-class Microfilter #5036AM	Pre-motor Anti-odor Microfilter #5425AM
Pre-motor HEPA Microfilter #5812ER	12" Brush Roller (Soft Bristle) #5010AM #5010GE	15" Brush Roller (Soft Bristle) #2838AM #2838GE	SEBO FRESH 1 Pkg. of 5 #0496AM

# 300 and 350 MECHANICAL

The MECHANICAL series are commercial-grade, upright vacuum cleaners that provide the utmost in reliability, durability, and cleaning effectiveness! There are two models, offering a choice between power head widths: the 12-inch 300 MECHANICAL and the 14-inch 350 MECHANICAL. They were designed to clean carpets and hard floors, along with superb pet hair removal.

To maximize durability, these vacuums are entirely mechanical, instead of electronic. In addition, all electrical components are in the power head, with none in the bag housing or handle, thereby minimizing electrical connectors and further improving reliability. This also means that the on/off switch is located on the power head, so the user's foot can easily activate it. Plus, the power cord is externally located, which allows instant, tool-free removal and replacement. All this, along with simple access to most machine parts, means that maintenance is quick and easy.

Three On-board Tools  
are Included with  
MECHANICAL models.



300 MECHANICAL  
Dark Gray  
#91303AM



350 MECHANICAL  
Dark Gray  
#91313AM



**Thirty-nine-foot Cord** – A 39-foot power cord saves time, by reducing the number of electrical outlet changes needed during use.

**Easy External Power Cord Replacement with Integrated Strain Relief** – A damaged power cord can be quickly replaced without tools or a technician, and it is protected from excessive strain during use by a unique cord-lock mechanism in the handle. This saves time and money.



THE ON/OFF SWITCH  
IS LOCATED ON  
THE POWER HEAD

**Scan the QR Code** – Watch the video on how to properly replace the power cord, and how to switch the vacuum cleaner on and off.



**Instant-use Wand and Suction Hose** – The integrated, instant-use wand and suction hose are always ready. Just pull out either tool, or both together, to clean hard-to-reach corners, edges, and crevices. The wand and hose together have an eight-foot reach. The suction hose is ideal for cleaning furniture. And an optional nine-foot extension hose is available, which creates a total hose length of 15 feet . . . perfect for cleaning stairs. Choose from a range of optional attachments that can be fitted to the wand or hose!

**Four-level, Manual Brush Height with Innovative Wand Adjustment Technique** – For optimal cleaning effectiveness, the brush height has four levels, which the user can adjust while standing upright, by using the cleaning wand's tip as a convenient aid to press the adjustment button.

**Brush Obstruction Indicator with Automatic Shut Off** – If an obstruction jams the brush roller, an indicator window notifies the user, the brush roller immediately stops spinning, and the machine shuts off. This feature prevents the belts from breaking and protects the motor and carpet from damage.



**Easy Brush-roller Strip Removal and Cleaning** – The MECHANICAL has tool-free brush-strip removal, so cleaning hair build-up or replacing it when the bristles are worn is quick and easy. This is part of its heavy-duty sealed brushing mechanism, which provides extra rugged durability, and ensures consistently effective brush agitation of the carpet pile.



**Easy Maintenance** – The clog removal door and brush-roller strip are easy to access on the power head.

**Foot Pedal Stress Release** – The quick-release foot pedal maximizes durability, by relieving excessive stress or force on the handle and bag housing when it's in the upright, locked position.



**Two Power Head Widths with One-sided Edge Cleaning** – The MECHANICAL 300 is 12 inches wide with a cleaning path of 10.5 inches. The MECHANICAL 350 is 14 inches wide with a cleaning path of 12.5 inches. Both heads have one-sided edge cleaning.

**Convenient Carrying Handle** – The vacuum is easy to carry with the convenient handle located at the top, backside of the bag housing.



**Three On-board, Full-size Tools** – The MECHANICAL comes standard with a crevice tool, dusting brush, and upholstery nozzle. Also, many optional accessories are available.

**Rotating Cord Hook** – Quickly unwind the power cord using its unique rotating hook.

**Low, 6.5-inch Profile** – Its low, flat-to-the-floor profile makes cleaning under furniture easy!

**Protective, Rubber-coated Wheels** – Its wheels protect all floor surfaces and provide smooth maneuverability.

**Huge, 1.4-gallon Filter Bag** – The large-capacity filter bag is convenient and economical because fewer bag changes are needed. And closing its hygiene cap prevents dust from escaping during bag removal and disposal.

**Durable, Heavy-duty Belts** – The reinforced, geared belts do not slip or stretch, resulting in a more efficient use of power, and they should last the life of the machine.

**Three-step Filtration** – It is equipped with a pre-motor microfilter, a three-layer AeraPure™ Bag, and an S-class or optional HEPA exhaust microfilter. This system provides long-lasting filtration with smooth airflow and excellent suction performance.

**Full Bag or Clog Indicator** – When a full bag, a clog in the airflow pathway, or an excessively dirty microfilter is detected, an indicator window located on the bag housing fills with orange color and a bypass valve opens, to prevent overheating and motor damage from a lack of adequate airflow.



	Attachments		
<b>Included MECHANICAL 300 and 350</b>	Crevice Nozzle #1092JE	Dusting Brush with Horsehair Bristles #1387GS	Upholstery Nozzle #1491JE
<b>Optional Three-piece Kit</b>	9' 2" Extension Hose* #1495AM	Parquet Brush* #1359GS	22" Extension Wand* #1084GS
	*All three items are available individually or as a three-piece attachment kit, #1991AM.		
<b>Additional Options</b>	Radiator Brush #1496GS	Flat Upholstery Nozzle #1090HG	Wall and Floor Brush #1325GS
	Hand-held Turbo Brush #6179ER	Dusting Brush, Nylon Bristles #1329GS	Dusting Brush, Large Opening #1094GS
	<b>Bags, Filters, Accessories and Wear Items</b>		
	8 AeraPure™ Bags #5093AM	Exhaust S-class Microfilter #50170ER	Pre-motor S-class Microfilter #5036AM
	Exhaust HEPA Microfilter #50169ER	Pre-motor Anti-odor Microfilter #5425AM	
	Pre-motor HEPA Microfilter #5812ER	300 Brush Strip #50415	350 Brush Strip #2046
			SEBO FRESH 1 Pkg. of 5 #0496AM



# DART

The stylish, ultra-quiet DART offers all the flexibility of a canister vacuum cleaner in an upright configuration! It has a convenient instant-use cleaning hose, excellent filtration, a detachable suction unit that becomes a powerful hand-held vacuum, plus two on-board attachments. Many optional attachments are also available. It features the 12-inch-wide ET-1 power head, with four-level manual height adjustment, that cleans both carpets and hard floors, easily removes pet hair, and the extension side of its L-shaped contour makes cleaning under counters easy! In addition, its spinning brush roller can be shut off to clean delicate rugs and hard floors with straight suction. It also includes tool-free brush roller removal, a light that illuminates when brush height is set too high, the bristles are excessively worn, or when automatic shut off occurs due to brush-roller obstructions.



**DART and FELIX Comparison** - The DART does NOT have some of the features that are available on its FELIX Premium counterpart, such as:

- 180° steering ability
- Variable suction control
- Adjustable handle height
- Hard-floor parquet brush attachment
- Automatic brush roller shut off when using the integrated suction hose

**Multi-surface Cleaning Capabilities** – With a power head for carpets and an optional parquet brush for hard floors, the DART provides all the cleaning flexibility of a canister vacuum!

**Power Head, Two On-board Tools** – Along with its commercial-quality ET-1 power head, it also comes standard with a crevice nozzle and a dusting brush.



**Flat-to-the-floor, 6-inch Profile** – The vacuum's low profile makes cleaning under furniture and beds easy!

**Three-step Filtration** – The DART features a pre-motor filter, a three-layer AeraPure™ bag, and an S-class exhaust microfilter.

**Large-capacity Filter Bag** – The .92-gallon, three-layer AeraPure™ bag is convenient and economical because fewer bag changes are needed. And closing its hygiene cap prevents dust from escaping during bag removal or disposal.



**Full Bag or Clog Indicator** – When a full bag, a clog in the airflow pathway, or an excessively dirty microfilter is detected, an indicator window on the bag housing lid fills with orange color and an airflow bypass valve opens, to prevent overheating and motor damage from a lack of adequate airflow.



**Protective, Rubber-coated Wheels** – Its wheels protect all floor surfaces and provide smooth maneuverability.

**Soft Start Switch** – Its gradual power-up extends motor life.

**Instant-use Suction Hose** – The integrated, instant-use suction hose is always ready! Just pull it out to clean corners, crevices, or furniture. Two on-board tools and a range of attachments can be fitted to the hose, such as a 22-inch wand for cleaning hard-to-reach areas, or a nine-foot extension hose, which creates a total length of 15 feet, is perfect for cleaning stairs.



**Detachable Suction Unit Creates a Hand-held, Portable Vacuum** – By removing its power head, the DART instantly transforms from an upright floor vacuum into a handheld portable vacuum, ideal for cleaning stairs, upholstery, and car interiors. It can be easily carried using its alternative side handle, as well.

**Thirty-one-foot Cord with Rotating, Quick-release Hook** – It is easy to quickly unwind the power cord by rotating the hook!



**Innovative Exhaust Filter** – Behind the stylish surface hides an ultra-modern, S-class exhaust microfilter that not only provides excellent filtration, but it also absorbs motor noise, resulting in extremely quiet operation.

**Power Head with One-sided Edge Cleaning** – The power head is 12 inches wide with a 10.5-inch cleaning path.



**Four-level, Manual Height Adjustment** – The brush height can be adjusted up or down for optimal cleaning effectiveness.

**Brush Obstruction Light with Automatic Shut Off** – If an obstruction jams the brush roller, a red warning light on the power head flashes and the brush roller stops spinning. This feature prevents the belt from breaking and protects the motor and carpet from damage.



**Easy Maintenance** – The clog removal door and replaceable brush roller are easy to access on the power head.

**Incorrect Height Setting or Worn Brush Light** – When brush height is set too high for optimal cleaning, or when the brush roller should be replaced because of reaching maximum bristle wear, a red warning light on the power head remains illuminated during use. The light shuts off when the condition is corrected.

**Easy Brush Removal and Cleaning** – Cleaning hair or other debris from the brush roller, or replacing it when its bristles are worn, is quick and easy, and no tools are required! This feature ensures consistently effective brush agitation of the carpet pile.



**Manual and Automatic Brush Shut Off** – The DART can clean delicate rugs or hard floors with straight suction because the brush roller can be manually switched off, by pressing the green illuminated on/off button located on the power head. Also, the brush roller automatically shuts off when the handle is in its upright, locked position.



Attachments				
Included DART		Dusting Brush with Horsehair Bristles #1387GS		
			Crevice Nozzle #1092GS	
Optional Three-piece Kit		Upholstery Nozzle* #1491GS		
		9" 2" Extension Hose* #1495AM		
	*All three items are available individually or as a three-piece attachment kit, #1999AM.			
Additional Options		Premium Kombi Nozzle #7260GS		
		Dusting Brush, Large Opening #1094GS		
		Hand-held Turbo Brush #6179ER		
		Flat Upholstery Nozzle #1090HG		
	<b>Bags, Filters, Accessories and Wear Items</b>			
		8 AeraPure™ Bags #7029AM		
		Pre-motor Filter #7012AM		

# FELIX Premium

The stylish, ultra-quiet FELIX offers all the flexibility of a canister vacuum cleaner in an upright configuration! It has highly maneuverable 180° steering ability, a convenient instant-use cleaning hose, excellent filtration, two on-board attachments, and a hard-floor parquet brush. Its detachable suction unit can also be used as a powerful hand-held vacuum with variable speed control. It features the 12-inch-wide ET-1 power head that has four-level manual height adjustment, cleans both carpets and hard floors, easily removes pet hair, and the extension side of its L-shaped contour makes cleaning under counters easy. In addition, its spinning brush roller can be shut off to clean delicate rugs and hard floors with straight suction. It also has tool-free brush roller removal, a light that illuminates when brush height is set too high, the bristles are excessively worn, or when automatic shut off occurs due to brush roller obstructions.

Available  
In-store Only

The **ONYX**  
Collection

**FREE**  
Warranty Bonus  
Included



Optional  
Value Pack  
Attachments



FELIX  
Premium  
Onyx  
#9807AM



Two On-board Tools  
and a Premium Parquet  
Brush are Included  
with **All** FELIX Premium  
models.



FELIX  
Premium  
Indigo  
#90814AM



FELIX Premium  
Rose  
#90812AMR



FELIX Premium  
Rosso  
#9809AM



**Multi-surface Cleaning Capabilities** – With a power head for carpets and a parquet brush for hard floors, the FELIX provides all the cleaning flexibility of a canister vacuum!

**Power Head, Two On-board Tools, plus a Parquet Brush** – Along with its commercial-quality ET-1 power head, it also comes standard with a crevice nozzle, dusting brush, and a hard-floor parquet brush.

**Flat-to-the-floor, 6-inch Profile** – The vacuum's low profile makes cleaning under furniture and beds easy!

**Three-step Filtration** – The FELIX features a pre-motor filter, a three-layer AeraPure™ bag, and an S-class exhaust microfilter.

**Large-capacity Filter Bag** – The .92-gallon, three-layer AeraPure™ bag is convenient and economical because fewer bag changes are needed. And closing its hygiene cap prevents dust from escaping during bag removal and disposal.

**Superb Steering Ability** – A unique, 180° turning power head offers excellent maneuverability around and under furniture.

**Protective, Rubber-coated Wheels** – Its wheels protect all floor surfaces and provide smooth maneuverability.



**Full Bag or Clog Indicator** – When a full bag, a clog in the airflow pathway, or an excessively dirty microfilter is detected, an indicator window on the bag housing lid fills with orange color and an airflow bypass valve opens, to prevent overheating and motor damage from a lack of adequate airflow.



**Variable Suction Control on Handle with Soft Start** – The user can select the suction power needed, from curtains to carpet. And its gradual power-up extends motor life.



**Three-level, Adjustable Handle** – This feature provides compact storage, maneuverability when the suction unit is detached, and easy adjustment to user height requirements.

**Instant-use Suction Hose** – The integrated, instant-use suction hose is always ready! Just pull it out to clean corners, crevices, or furniture. Two on-board tools and a range of attachments can be fitted to the hose, such as a 22-inch wand for cleaning hard-to-reach areas, or a nine-foot extension hose, which creates a total length of 15 feet, is perfect for cleaning stairs.



**Detachable Suction Unit Creates a Hand-held, Portable Vacuum** – By removing its power head, the FELIX instantly transforms from an upright floor vacuum into a handheld portable vacuum, ideal for cleaning stairs, upholstery, and car interiors. It can be easily carried using its alternative side handle, as well.



**Thirty-one-foot Cord with Rotating, Quick-release Hook** – It is easy to quickly unwind the power cord by rotating the hook!

**Easy Maintenance** – The clog removal door and replaceable brush roller are easy to access on the power head.

**Innovative Exhaust Filter** – Behind the stylish surface hides an ultra-modern, S-class exhaust microfilter that not only provides excellent filtration, but it also absorbs motor noise, resulting in extremely quiet operation.

**Power Head with One-sided Edge Cleaning** – The power head is 12 inches wide with a 10.5-inch cleaning path.

**Four-level, Manual Height Adjustment** – The brush height can be adjusted up or down for optimal cleaning effectiveness.

**Manual and Automatic Brush Shut Off** – The FELIX can clean delicate rugs or hard floors with straight suction because the brush roller can be manually switched off, by pressing the green illuminated on/off button located on the power head. Also, the brush roller automatically shuts off when the suction hose is removed from its housing port, or when the handle is in its upright, locked position.

**Brush Obstruction Light with Automatic Shut Off** – If an obstruction jams the brush roller, a red warning light on the power head flashes and the brush roller stops spinning. This feature prevents the belt from breaking and protects the motor and carpet from damage.



**Incorrect Height Setting or Worn Brush Light** – When brush height is set too high for optimal cleaning, or when the brush roller should be replaced because of reaching maximum bristle wear, a red warning light on the power head remains illuminated during use. The light shuts off when the condition is corrected.

**Easy Brush Removal and Cleaning** – Cleaning hair or other debris from the brush roller, or replacing it when its bristles are worn, is quick and easy, and no tools are required! This feature ensures consistently effective brush agitation of the carpet pile.



Attachments			
Included FELIX Premium			
	Exceptions: Crevice Tool - Onyx #1092SW, Rose #1092JE		
Optional Three-piece Kit			
	*All three items are available individually or as a three-piece attachment kit, #1999AM.		
Additional Options			
Dusting Brush, Large Opening #1094GS			
Bags, Filters, Accessories and Wear Items			

# DART and FELIX EXHAUST FILTER TEXTILES

The FELIX and DART offer innovative 250-square-inch, S-class microfilters that hide behind textiles with ultra-modern, stylish designs. These filters not only provide excellent filtration, but they also absorb motor noise, which results in extremely quiet operation. The fun part about the DART and FELIX models is that by changing their exhaust filter designs, you can personalize them to fit your color and style preferences.

FELIX

DART



Exhaust Filter  
Textile - orange/purple,  
circles & diamonds  
#7095ER01



Exhaust Filter  
Textile - light blue,  
waves  
#7095ER02



Exhaust Filter  
Textile - tan/burgundy,  
plaid  
#7095ER03



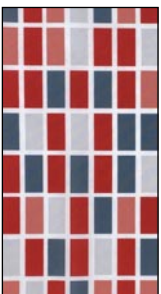
Exhaust Filter  
Textile - black/white,  
gradation  
#7095ER04



Exhaust Filter  
Textile - marine blue,  
solid  
#7095ER08



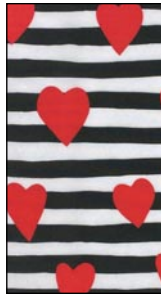
Exhaust Filter  
Textile - white/gray,  
ovals  
#7095ER11



Exhaust Filter  
Textile - red/gray,  
rectangles  
#7095ER12



Exhaust Filter  
Textile - red/pink,  
roses  
#7095ER37



Exhaust Filter  
Textile - black/white,  
red hearts  
#7095ER38



Exhaust Filter  
Textile - indigo/white,  
blossoms  
#7095ER39



Exhaust Filter  
Textile - black/white,  
leopard  
#7095ER40



Exhaust Filter  
Textile - pink/gray,  
peony  
#7095ER41

# SEBO AIRBELT D, E, and K TEXTILES

The AIRBELT's textile-covered, soft-foam bumper protects furniture, walls, and the vacuum itself from incurring scratches and scuffs during use. The bumper also diffuses exhaust air, which contributes to its ultra-quiet performance. The AIRBELT models allow you to change the design of your textile whenever you choose.

## AIRBELT D



## AIRBELT K



AIRBELT D and K  
Textile - gray black,  
solid  
#6047AM01



AIRBELT D and K  
Textile - black/silver,  
ovals  
#6047AM07

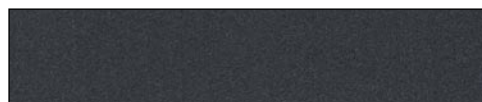


AIRBELT D and K  
Textile - orange/silver,  
squares  
#6047AM12



AIRBELT D and K  
Textile - black/silver,  
stripes  
#6047AM10

## AIRBELT E



AIRBELT E  
Textile - gray black,  
solid  
#8221AM01



AIRBELT E  
Textile - black/silver,  
ovals  
#8221AM07



AIRBELT E  
Textile - black/silver,  
stripes  
#8221AM10



# AIRBELT D1 Turbo and D4 Premium

The two AIRBELT D models are powerful, ultra-quiet, full-size canister vacuum cleaners with three on-board attachments, a giant 1.5-gallon bag, an unmatched 40-foot cord and 52-foot cleaning radius, protective rubber-coated wheels, a durable telescopic tube with quick-release connections, and a full bag or clog indicator. A unique tapered suction hose, with a 320° rotating canister connection, increases their airflow velocity, minimizes clogs, and improves maneuverability. They also feature excellent filtration, a push-button cord rewinder, and a soft-foam bumper that protects the vacuum, furniture, and walls from scuffs and scratches.

The AIRBELT D1 Turbo is a straight-suction vacuum that offers an air-driven turbo head for use on rugs, a parquet brush for hard floors, and its suction-control knob is located on the canister body. However, the AIRBELT D4 Premium offers much more! In addition to a parquet brush, it includes the commercial-quality ET-1 electric power head that cleans both carpets and hard floors, has excellent pet hair removal, and the extension side of its L-shaped contour makes cleaning under counters easy. The power head also offers a super-low 3.5-inch horizontal cleaning profile, tool-free brush roller removal, and automatic shut off due to brush roller obstructions. Its foremost feature, a dual-control handle, provides unsurpassed user convenience with an integrated on/off switch for the brush roller, two soft-touch buttons that adjust suction power, and it facilitates effortless control of the power head's 180° steering ability. Suction power can even be optically monitored with its one-of-a-kind LED indicator, located on the canister body.

Available  
In-store Only

The **ONYX**  
Collection

**FREE**  
Warranty Bonus  
Included



Three On-board Tools  
and a Parquet Brush  
are Included with  
All AIRBELT D models.



Optional Value Pack  
Attachments



AIRBELT D4  
Premium  
Black  
#90940AM

**Flat-to-the-floor, 3.5-inch Profile** – A low, cleaning-head profile makes reaching under furniture and beds easy!

**Three Full-size, On-board Tools** – A crevice nozzle, an upholstery nozzle, and a dusting brush are always on-board and ready for use. Also, many optional attachments are available that can be fitted to the telescopic tube or the hose handle.

**Soft-start Feature** – The vacuum's gradual power-up capability extends motor life.

**Tapered Suction Hose with Rotating Connection** –

The D1 and D4 feature unique tapered suction hoses, which further increases their airflow velocity and minimizes clogs. A brilliantly designed hose-to-canister connection allows 320° rotation of the suction hose, providing easier user movement and machine maneuverability.



**Full-size Canister Vacuum** – The D4 is a full-size canister vacuum that offers a giant filter bag and an extra-long power cord.

**Unmatched, 40-foot Cord and 52-foot Operating Range** – Its cleaning radius is amazing! Large areas can be cleaned without changing electrical outlets. Plus, the seven-foot suction hose provides superb user and machine maneuverability.



AIRBELT D4  
Premium  
White  
#90941AM



AIRBELT D1 Turbo  
Black Cherry  
#90604AM



**Push-button Cord Rewinder** – Its super-long power cord rewinds by simply pressing a button.

**Full Bag or Clog Indicator** – When a full bag, clog, or excessively dirty microfilter is detected, an indicator in the window turns orange, which warns the user of inadequate airflow to cool the motor. If this condition persists, its thermal cut-off switch will shut down the motor after a short duration of time.

**Patented AIRBELT Bumper** – The textile-covered, soft-foam bumper protects furniture, walls, and the vacuum itself from incurring scratches and scuffs during use. The bumper also diffuses exhaust air, which contributes to its ultra-quiet performance.

**Four Rubber-coated Castor-wheels, Mounted on Bearings and Steel Axles** – The rubber-coated castor-wheels glide easily and gently over all floor types, providing exceptional maneuverability and protection of floor surfaces.



**Convenient Parking and Storage Aids** – After the work is done, the suction hose and telescopic tube, with parquet brush or combination nozzle, can be firmly stored on the canister's underside (shown) or backside housing.



**Giant, 1.5-gallon Filter Bag** – The large filter bag is convenient and economical because fewer bag changes are needed and closing its built-in hygiene cap prevents dust from escaping during bag disposal.



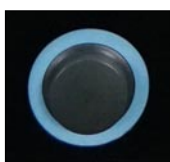
**Three-step Filtration** – It features a pre-motor filter, a three-layer AeraPure™ bag, an S-class exhaust microfilter, and a tightly sealed casing, which prevents dirty air from escaping through its seams.

## AIRBELT D4 Premium

**Durable Power Head with Manual Height Adjustment and Amazing Steering Ability** – The D4 model comes standard with the commercial-grade ET-1 electric power head, which is 12 inches wide, effectively cleans both carpets and hard floors, easily removes pet hair, offers four-level manual brush height adjustment, and its 180° steering ability provides amazing maneuverability.

**Easy Brush Roller Removal, User Warning Lights, and Automatic Obstruction Shut Off** – The ET-1 has easy, tool-free brush roller removal, a handy clog removal door, and a red warning light with automatic shut off, if the brush roller is jammed or obstructed. Also, its warning light remains illuminated during use when brush height is set too high for optimal cleaning, or when the brush roller should be replaced due to excessively worn bristles.

**LED Suction-power Indicator** – This technology allows the user to optically monitor the vacuum's suction power. When using lower power settings, the LED light rotates slowly. When using higher power settings, the light rotates more quickly. When the power is set to standby mode, the light slowly blinks back and forth, left to right.



**Dual-control Handle** – The D4's remarkable dual-control handle has two soft-touch buttons that provide convenient suction adjustment, from maximum power for normal cleaning to minimal suction for delicate tasks, such as curtains. The hose handle also offers an on/off switch for the power head's brush roller when straight suction is required, such as cleaning fine rugs.



## AIRBELT D1 Turbo

The AIRBELT D1 Turbo is a straight-suction vacuum, so it differs from the AIRBELT D4 Premium as follows:

**Turbo Head and Parquet Brush, but No Power Head** – The D1 has a telescopic tube and suction hose without an integrated power cord, so it does not accommodate an electric power head. Instead, it comes with an air-driven turbo head for rugs and a parquet brush for hard floors.

**Suction-control Knob on Canister Body** – Because the D1 has a hose and telescopic tube without a power cord, its suction-control knob is located on the canister body, not the handle, and an LED light illuminates when it is powered on, but it does not include the optical suction-power indicator available on the D4.

Attachments					
Included All D Models	Crevice Nozzle #8066GS	Upholstery Nozzle #8142GS	Included D4 Models ET-1 Power Head Colors: White or Black		
	Dusting Brush #8146ER	Parquet Brush #6391DA			
	Dusting Brush, Large Opening #1094GS	Dusting Brush, Nylon Bristles #1329GS		Flat Upholstery Nozzle #1090HG	Radiator Brush #1496GS
	22" Extension Wand #1084GS	24" Crevice Nozzle #1093JV		Hand-held Turbo Brush #6179ER	9' 2" Extension Hose #1495AM
Optional Attachments	Turn and Clean Parquet Brush #1327WS	Premium Parquet Brush #7200GS	TT-C Turbo Head #8365GS		
	Premium Kombi Nozzle #7260GS	Kombi Nozzle #8351GS	Kombi Nozzle #6735GS		
	Bags, Filters, Accessories and Wear Items				
	8 AeraPure™ Bags #8120AM	Filter Set Includes a Pre-motor Filter and Exhaust S-class Microfilter #8191AM	AIRBELT Textile gray black, solid #6047AM01	AIRBELT Textile black/silver, stripes #6047AM10	
		12" Brush Roller #5010AM (Soft Bristle) #5010GE	SEBO FRESH 1 Pkg. of 5 #0496AM		

# AIRBELT E1 Kombi, E2 Turbo and E3 Premium

The three AIRBELT E models are powerful, ultra-quiet, mid-size canister vacuum cleaners with attractive curves and contours that feature three on-board attachments, a large .92-gallon bag, a generous 25-foot cord and 37-foot cleaning radius, protective rubber-coated wheels, a durable telescopic tube with quick-release connections, and a full bag or clog indicator. They also feature excellent filtration, a push-button cord rewinder, and a soft-foam bumper that protects the vacuum, furniture, and walls from scuffs and scratches.

The E series offers two straight-suction models that provide a choice of cleaning heads. The AIRBELT E1 Kombi includes a combination nozzle with retractable bristles for use on rugs and hard floors, while the AIRBELT E2 Turbo includes an air-driven turbo head for rugs and a parquet brush for hard floors. Both models have a suction-control knob located on the canister body.

The AIRBELT E3 Premium offers much more! In addition to a parquet brush, it includes the commercial-quality ET-1 electric power head that cleans both carpets and hard floors, has excellent pet hair removal, and the extension side of its L-shaped contour makes cleaning under counters easy. The power head also offers a super-low 3.5-inch horizontal cleaning profile, tool-free brush roller removal, and automatic shut off due to brush roller obstructions, while its tapered suction hose increases airflow velocity and decreases clogs. Foremost among its many features, the E3's dual-control handle provides unsurpassed user convenience with an integrated on/off switch for the brush roller, a slider switch that adjusts suction power, and it facilitates effortless control of the power head's 180° steering ability.

Available  
In-store Only

The **ONYX**  
Collection

**FREE**  
Warranty Bonus  
Included



AIRBELT E3  
Premium  
Black  
#91650AM



**Flat-to-the-floor, 3.5-inch Profile** – A low, cleaning-head profile makes reaching under furniture and beds easy!

**Mid-size Canister Vacuum** – The AIRBELT E models are considered mid-size canister vacuums, which mean they are smaller, more compact machines that weigh about four pounds less than SEBO's D-model canisters.

**Three Full-size, On-board Tools** – A crevice nozzle, an upholstery nozzle, and a dusting brush are always on-board and ready for use. Also, many optional attachments are available that can be fitted to the telescopic tube or the hose handle.

**Long, 25-foot Cord and 37-foot Operating Range** – Its cleaning radius saves time because it can clean large areas without changing electrical outlets. Plus, the seven-foot suction hose provides superb user maneuverability.

**Push-button Cord Rewinder** – The power cord rewinds by simply pressing a button.



AIRBELT E1  
Kombi  
White  
with  
Combination  
Nozzle  
#91602AM

AIRBELT E3  
Premium  
Red  
with ET-1 and  
Parquet Brush  
#91647AM



AIRBELT E3  
Premium  
White  
with ET-1 and  
Parquet Brush  
#91646AM



AIRBELT E3  
Premium  
Graphite  
with ET-1 and  
Parquet Brush  
#91648AM



AIRBELT E2  
Turbo  
Dark Blue  
with Parquet  
Brush  
and Turbo  
Head  
#91620AM

**Large-capacity Filter Bag** – The .92-gallon filter bag is convenient and economical because fewer bag changes are needed and closing its built-in hygiene cap prevents dust from escaping during bag removal and disposal.

**Three Protective, Rubber-coated Wheels Mounted on Steel Axles** – The superb, rubber-coated castor-wheels glide easily and gently over all floor types, providing exceptional maneuverability and protection of floor surfaces.



**Soft-start Feature** – The vacuum's gradual power-up capability extends motor life.

**Convenient Parking and Storage Aids** – When the suction hose and telescopic tube are connected to the parquet brush, turbo head, or combination nozzle, they can be firmly stored on the canister's underside or backside housing.

**Full Bag or Clog Indicator** – When a full bag, clog, or excessively dirty microfilter is detected, an indicator window turns orange, which warns the user of inadequate airflow to cool the motor. If this condition persists, its thermal cut-off switch will shut down the motor after a short duration of time.

**Patented AIRBELT Bumper** – The textile-covered, soft-foam bumper protects furniture, walls, and the vacuum itself from incurring scratches and scuffs during use. It also diffuses exhaust air, which contributes to its ultra-quiet performance.



**Three-step Filtration** – It features a pre-motor filter, a three-layer AeraPure™ bag, an S-class exhaust microfilter, and a tightly sealed casing.

## AIRBELT E3 Premium

**Durable Power Head with Manual Height Adjustment and Amazing Steering Ability** – The E3 model comes standard with the commercial-grade ET-1 electric power head, which is 12 inches wide, effectively cleans both carpets and hard floors, easily removes pet hair, offers four-level manual brush height adjustment, and its 180° steering ability provides amazing maneuverability.

**Easy Brush Roller Removal, User Warning Lights, and Automatic Obstruction Shut Off** – The ET-1 power head has easy, tool-free brush roller removal, a handy clog removal door, and a red warning light with automatic shut off, if the brush roller is jammed or obstructed. Also, its warning light remains illuminated during use when brush height is set too high for optimal cleaning, or when the brush roller should be replaced due to excessively worn bristles.



**Dual-control Handle and Tapered Suction Hose** – The E3's extraordinary dual-control handle has a slider switch that provides convenient suction adjustment, from maximum power for normal cleaning to minimal suction for delicate tasks, such as curtains. The hose handle also offers an on/off switch for the power head's brush roller when straight suction is required, such as cleaning fine rugs. The E3's unique tapered suction hose further increases its airflow velocity and minimizes clogs.



## AIRBELT E1 Kombi and E2 Turbo

The AIRBELT E1 and E2 models are straight-suction vacuums, so they differ from the AIRBELT E3 as follows:

**Turbo Head and Parquet Brush, or Kombi Nozzle, but No Power Head** – The E1 and E2 models have telescopic tubes and suction hoses without integrated power cords, so they do not accommodate electric power heads. Instead, the E1 Kombi only comes with a combination nozzle with retractable bristles. The E2 Turbo comes with an air-driven turbo head and a parquet brush. Both models clean hard floors and rugs.

**Suction-control Knob on Canister Body** – Because the E1 and E2 models have hoses and telescopic tubes without power cords, their suction-control knobs are located on their canister bodies, not the handles.

Attachments			
Included E3 Premium		Dusting Brush with Horsehair Bristles #1387GS	
	ET-1 Power Head included with E3 models. Colors: Black, Red, White, or Graphite		
	Upholstery Nozzle #8210GS	Crevice Nozzle #8066GS	Parquet Brush #6391DA
Included E2 Turbo			
	Crevice Nozzle #8066GS	Parquet Brush #6391DA	Dusting Brush with Horsehair Bristles #1387GS
	Upholstery Nozzle #8210GS		TT-C Turbo Head #8365GS
Included E1 Kombi			
	Crevice Nozzle #8066GS	Dusting Brush with Horsehair Bristles #1387GS	Upholstery Nozzle #8210GS
			Kombi Nozzle #8351GS
Optional Attachments			
<b>Bags, Filters, Accessories and Wear Items</b>			
8 AeraPure™ Bags #8300AM	Service Box Includes 8 Bags, a Pre-motor Filter and Exhaust S-class Microfilter #8334AM	Filter Set Includes a Pre-motor Filter and Exhaust S-class Microfilter #8322AM	
12" Brush Roller #5010AM (Soft Bristle) #5010GE	AIRBELT Textile gray black, solid #8221AM01	AIRBELT Textile black/silver, ovals #8221AM07	AIRBELT Textile black/silver, stripes #8221AM10
			SEBO FRESH 1 Pkg. of 5 #0496AM



# AIRBELT K2 Kombi, K2 Turbo and K3 Premium

The three AIRBELT K models are powerful, ultra-quiet, mid-size canister vacuum cleaners that feature three on-board attachments, a large .8-gallon bag, a generous 25-foot cord and 37-foot cleaning radius, protective rubber-coated wheels, a durable telescopic tube with quick-release connections, and a full bag or clog indicator. They also feature excellent filtration, a tug-and-retract cord rewriter, and a soft-foam bumper that protects the vacuum, furniture, and walls from scuffs and scratches.

The K series offers two straight-suction models that provide a choice of cleaning heads. The AIRBELT K2 Kombi includes a combination nozzle with retractable bristles for use on rugs and hard floors, while the AIRBELT K2 Turbo includes an air-driven turbo head for rugs and a parquet brush for hard floors. Both models have a suction-control knob that is located on the canister body.

The AIRBELT K3 Premium offers much more! In addition to a parquet brush, it includes the commercial-quality ET-1 electric power head that cleans both carpets and hard floors, has excellent pet hair removal, and the extension side of its L-shaped contour makes cleaning under counters easy. The power head also offers a super-low 3.5-inch horizontal cleaning profile, tool-free brush roller removal, and automatic shut off due to brush roller obstructions. Foremost among its many features, the K3's dual-control handle provides unsurpassed user convenience with an integrated on/off switch for the brush roller, a slider switch that adjusts suction power, and it facilitates effortless control of the power head's 180° steering ability.

Available  
In-store Only

The **ONYX**  
Collection

**FREE**  
Warranty Bonus  
Included



**Flat-to-the-floor, 3.5-inch Profile** – A low, cleaning-head profile makes reaching under furniture and beds easy!

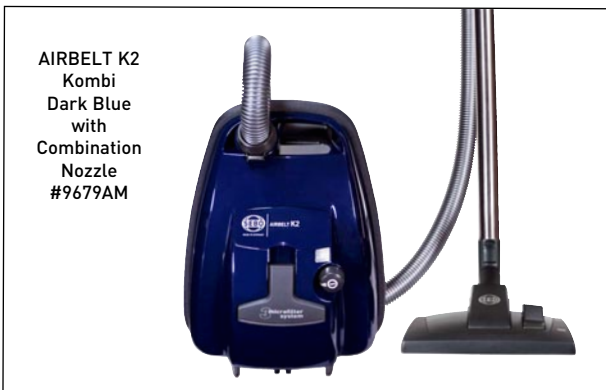
**Mid-size Canister Vacuum with Large Filter Bag** – The K models are considered mid-size canister vacuums, which mean they are smaller, more compact machines. They have a .8-gallon filter bag and weigh about four pounds less than SEBO's D-model canisters.

**Three On-board Tools** – The K canisters come with a full-size crevice tool and dusting brush, and a mid-size upholstery nozzle. Also, many optional attachments are available that can be fitted to the telescopic tube or the hose handle.

**Three-step Filtration** – They feature an S-class pre-motor microfilter, a three-layer AeraPure™ bag, an exhaust filter, and a tightly sealed casing, which prevents dirty air from escaping through its seams. An optional HEPA pre-motor microfilter is also available.



AIRBELT K3  
Premium  
Black  
#90688AM



AIRBELT K2  
Kombi  
Dark Blue  
with  
Combination  
Nozzle  
#9679AM

AIRBELT K3  
Premium  
White  
with ET-1 and Parquet Brush  
#90693AM

AIRBELT K3  
Premium  
Red  
with ET-1 and Parquet Brush  
#90687AM



AIRBELT K2  
Turbo  
Black Cherry  
with Turbo  
Head  
and Parquet  
Brush  
#9678AM





**Long, 25-foot Power Cord and 37-foot Operating Range** – Its cleaning radius saves time because it can clean large areas without changing electrical outlets. Plus, the seven-foot suction hose provides superb user maneuverability.

**Convenient Parking and Storage Aids** –

The suction hose and telescopic tube, when connected to the parquet brush or combination nozzle, can be firmly stored on the canister's underside or backside housing.



**Tug-and-Retract Cord Rewinder** – The K models offer a "tug-and-retract" cord rewriter, instead of a push-button rewriter, which is the type offered on the AIRBELT D and E models.

**Soft-start Feature** – The vacuum's gradual power-up capability extends motor life.

**Full Bag or Clog Light** – When a full bag, a clog in the airflow pathway, or an excessively dirty microfilter is detected, an orange warning light located on the canister body illuminates and an airflow bypass valve opens. This feature prevents overheating and motor damage from a lack of adequate airflow.

**Three Protective, Rubber-coated Wheels** – The castor wheels glide easily and gently over all floor types, providing exceptional maneuverability and protection of floor surfaces.



**Patented AIRBELT Bumper** – The textile-covered, soft-foam bumper protects furniture, walls, and the vacuum itself from incurring scratches and scuffs during use. It also diffuses exhaust air, which contributes to its ultra-quiet performance.

## AIRBELT K3 Premium

**Durable Power Head with Manual Height Adjustment and Amazing Steering Ability** – The K3 model comes standard with the commercial-grade ET-1 electric power head, which is 12 inches wide, effectively cleans both carpets and hard floors, easily removes pet hair, offers four-level manual brush height adjustment, and its 180° steering ability provides amazing maneuverability.

**Easy Brush Roller Removal, User Warning Lights, and Automatic Obstruction Shut Off** – The ET-1 power head has easy, tool-free brush roller removal, a handy clog removal door, and a red warning light with automatic shut off if the brush roller is jammed or obstructed. Also, its warning light remains illuminated during use, when brush height is set too high for optimal cleaning, or when the brush roller should be replaced due to excessively worn bristles.



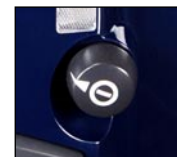
**Dual-control Handle with Suction-power Adjustment and Brush Roller On/Off Switch** – The K3's extraordinary dual-control handle has a slider switch that provides convenient suction adjustment, from maximum power for normal cleaning to minimal suction for delicate tasks, such as curtains. The hose handle also offers an on/off switch for the power head's brush roller when straight suction is required, such as cleaning fine rugs.

## AIRBELT K2 Kombi and Turbo

The K2 Kombi and K2 Turbo models are both straight-suction vacuums, so they differ from the K3 as follows:

**Turbo Head and Parquet Brush, or Kombi Nozzle, but No Power Head** – The K2s have telescopic tubes and suction hoses without integrated power cords, so they do not accommodate electric power heads. The K2 Turbo comes with an air-driven turbo head and parquet brush, but the K2 Kombi comes with a combination nozzle with retractable bristles. Both models clean hard floors and rugs.

**Suction-control Knob on Canister Body** – Because the K2 models have hoses and telescopic tubes without power cords, their suction-control knobs are located on their canister bodies, not the handles.



Attachments					
Included All K Models	Dusting Brush with Horsehair Bristles #1387GS	Included K3 Premium	ET-1 Power Head included with K3 models. Colors: Red, Black or White	Parquet Brush #6391DA	
	Upholstery Nozzle #6627GS		Crevice Nozzle #1092GS		
Included K2 Kombi	Kombi Nozzle #8351GS	Included K2 Turbo	TT-C Turbo Head #8365GS	Parquet Brush #6391DA	
Optional Attachments	Dusting Brush, Large Opening #1094GS	Dusting Brush, Nylon Bristles #1329GS	Radiator Brush #1496GS	Flat Upholstery Nozzle #1090HG	
	Hand-held Turbo Brush #6179ER	22" Extension Wand #1084GS	9' 2" Extension Hose #1495AM	Wall and Floor Brush #1325GS	
	Turn and Clean Parquet Brush #1327WS	24" Crevice Nozzle #1093JV	TT-C Turbo Head #8365GS	Premium Parquet Brush #7200GS	
	Premium Kombi Nozzle #7260GS		Kombi Nozzle #8351GS	Kombi Nozzle #6735GS	
Bags, Filters, Accessories and Wear Items					
8 AeraPure™ Bags* #6629AM	Pre-motor S-class Microfilter* #6191AM	Exhaust Filter* #6608ER	Filter Set Includes a Pre-motor S-class Microfilter and Exhaust Filter #6696AM		
Service Box #6695AM	*All three items are also available as a Service Box #6695AM, containing 8 Bags, an Exhaust Filter, and a Pre-motor S-class Microfilter.		HEPA Service Box #6431AM contains 8 Bags, an Exhaust Filter, and a Pre-motor HEPA Microfilter.		
12" Brush Roller #5010AM (Soft Bristle) #5010GE	AIRBELT Textile gray/black, solid #6047AM01	AIRBELT Textile black/silver, ovals #6047AM07	AIRBELT Textile orange/silver, squares #6047AM12	SEBO FRESH 1 Pkg. of 5 #0496AM	

# ET POWER HEADS and CENTRAL VACUUM WAND

ET electric power heads are recognized worldwide as the most durable, reliable, and best designed on the market. The 12-inch ET-1 and 15-inch ET-2 are virtually maintenance free, offer amazing 180° steering ability, have four-level manual height adjustment, and feature an obstruction warning light with automatic shut-off that is designed to protect the motor, belts, and carpets from damage. The warning light also illuminates when brush height is set too high for optimal cleaning or when the brush roller's bristles are excessively worn.

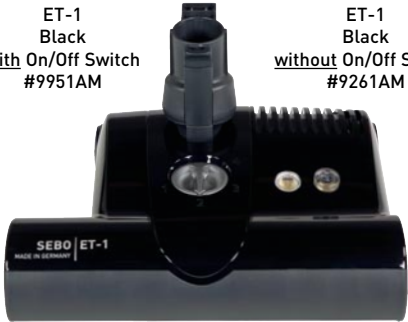
They have protective rubber-coated wheels, effectively clean both carpets and hard floors, provide excellent pet hair removal, and the brush roller can be manually switched off (on some models) for straight-suction cleaning of hard floors and delicate rugs. In addition, the extension side of its L-shaped contour makes cleaning under counters easy. Removing the brush roller is simple and no tools are required, so it can be quickly cleaned or replaced, which ensures consistently effective brush agitation of the carpet pile. By adding a special telescopic wand, ET power heads can be connected to most central vacuum handle and hose units.

ET-1  
White  
with On/Off Switch  
#9258AM



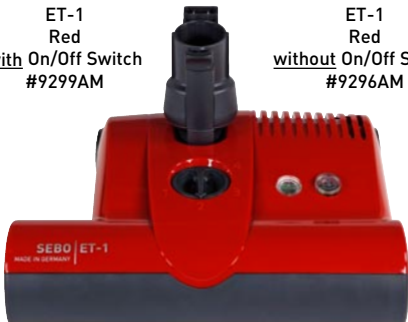
ET-1  
White  
without On/Off Switch  
#9260AM

ET-1  
Black  
with On/Off Switch  
#9951AM



ET-1  
Black  
without On/Off Switch  
#9261AM

ET-1  
Red  
with On/Off Switch  
#9299AM



ET-1  
Red  
without On/Off Switch  
#9296AM

ET-1  
Graphite  
without On/Off Switch  
#9988AM



**Two Widths with Amazing Steering Ability** – The ET-1 is 12 inches wide and has a 10.5-inch cleaning path, and the ET-2 is 15 inches wide and has a 13-inch cleaning path. Both heads have 180° steering ability that provides amazing maneuverability.

**Four-level Height Adjustment, Rubber-coated Wheels, and Manual Brush-roller Shut Off (optional)** – They effectively clean both carpets and hard floors, easily remove pet hair, and have four-level manual brush height adjustment. And to clean delicate rugs and hard floors with straight suction, the ET's brush roller can be manually switched off (optional), and they have rubber-coated wheels to protect flooring surfaces.

**Easy Brush Roller Removal, User Warning Lights, and Automatic Obstruction Shut Off** – ET power heads also have easy tool-free brush roller removal, a convenient clog removal door, and a red user warning light with automatic shut off for brush roller obstructions. This prevents the belt from breaking and protects the motor and carpet from damage. A warning light also remains illuminated during use, when brush height is set too high for optimal cleaning, or when the brush roller should be replaced due to excessively worn bristles.

ET-2  
Black  
without On/Off Switch  
#9251AM



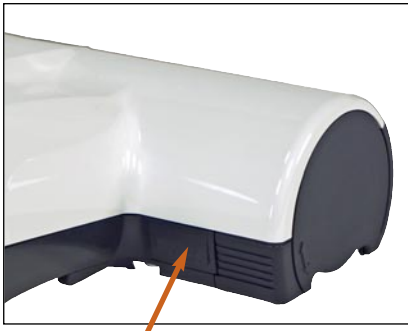
ET-2  
Black  
with On/Off Switch  
#9958AM

ET-2  
White  
with On/Off Switch  
#9259AM

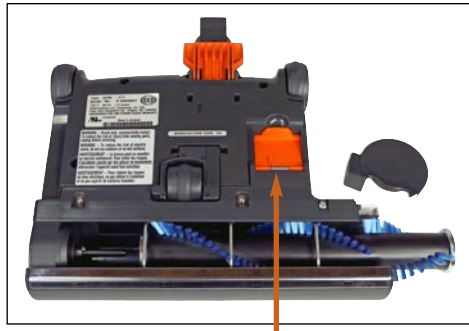


ET-2  
Red  
with On/Off Switch  
#9250AM





Press Button and Rotate Cap for Easy Brush Removal



Easy Maintenance with Clog Clean-out Door



Power Heads are Available with or without On/Off Switch



180° Rotating Swivel Neck



Rubber-coated Wheels



Four-level Brush Adjustment



Automatic Obstruction Shut-off Indicator



Central Vacuum Wand #6272CA compatible with SEBO ET Power Heads

**Central Vacuum Wand** - This special wand fits into the unique swivel-neck diameter of ET-1 and ET-2 power heads, so they can be connected to most central vacuum handle and hose units. The telescopic wand can be adjusted from 24" to 37" in length, to accommodate the correct operating height of individual users. It's made of stainless steel and high-quality plastic that is durable and reliable.

**Central Vacuum Wand Adapter** - If keeping an existing telescopic wand is desired, this device fits into the swivel neck of ET-1 and ET-2 power heads and can attach to most existing central vacuum wands.

### Attachments and Accessories



Central Vacuum Wand Compatible with SEBO ET Power Heads #6272CA



Central Vacuum Wand Adapter #2780AM

### Wear Items



ET-1 Brush Roller #5010AM (Soft Bristle) #5010GE



ET-2 Brush Roller #2838AM (Soft Bristle) #2838GE

# ATTACHMENTS, ADAPTERS and MOUNTING CLIPS

SEBO's attachments and accessory items effectively clean floors, furniture, and those hard-to-reach places. They are durable and made of high-quality plastic that will last a lifetime with simple maintenance. The kombi nozzles and parquet brushes have replaceable bristle strips. The turbo nozzles have removable brush rollers for easy cleaning or replacement. Please refer to the appropriate model-specific chart when purchasing your attachments and accessory items. These items fit only SEBO machines; however, an adapter to non-SEBO attachments is available.



Standard Kombi Nozzle for E1 and K2 Kombi. Optional for other Canisters #8351GS



Optional Kombi Nozzle for Canisters #6735GS



Optional Premium Kombi Nozzle for Canisters, FELIX, and DART #7260GS



Standard TT-C Turbo Head for E2, K2 Turbo, and D1. Optional for other Canisters #8365GS



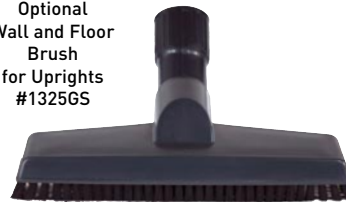
Standard Premium Parquet Brush for FELIX. Optional for DART and Canisters #7200GS



Optional Hand-held Turbo Brush for all models #6179ER



Optional Wall and Floor Brush for Uprights #1325GS



Optional Friction-fit Parquet Brush for Uprights #1359GS



Standard Parquet Brush for all Canisters, but optional for E1 and K2 Kombi #6391DA



Optional Turn and Clean Parquet Brush for Canisters #1327WS



Mop with bottom plate for Turn and Clean #1326WS



Optional Pet Hair Grooming Brush #1497WS  
Requires Adapter #1766ST







Optional  
Upholstery Nozzle  
with Pet Hair  
Collection Strips  
#1492WS  
Requires  
Adapter  
#1766ST



Upholstery Nozzle  
for AIRBELT D  
#8142GS



Upholstery Nozzle  
for AIRBELT K  
#6627GS



Upholstery Nozzle,  
black  
#1491SW



Upholstery Nozzle,  
gray black  
#1491GS



Upholstery Nozzle,  
light gray  
#1491JE



Optional  
Flat Upholstery Nozzle  
#1090HG



Upholstery Nozzle  
for AIRBELT E  
#8210GS



Optional  
Radiator Brush  
#1496GS



Optional  
Brush Roller  
Cleaning Tool  
#8366WS



Optional  
22" Extension Wand  
#1084GS



Optional  
24" Crevice Nozzle  
#1093JV



Optional  
Dusting Brush with  
Nylon Bristles  
#1329GS



Optional  
Dusting Brush with  
Large Opening and  
Nylon Bristles  
#1094GS



Dusting Brush  
for AIRBELT D  
#8146ER



Dusting Brush  
with Horsehair Bristles  
#1387GS



Optional  
9' 2" Extension Hose  
#1495AM



Crevice Nozzle,  
light gray  
#1092JE



Crevice Nozzle,  
black  
#1092SW



Crevice Nozzle,  
gray black  
#1092GS



Crevice Nozzle  
for AIRBELT D and E  
#8066GS



Optional  
Adapter for SEBO's  
38mm handles to 1.25"  
non-SEBO attachments  
#1766ST



Optional  
Extender Sleeve for  
use with Hand-held  
Turbo Brush on  
D4, E3, and K3  
#1777ST



Adapter Sleeve for  
Dusting Brush Mounting  
Clip for K2, E1, and E2  
#6668GS



Adapter Sleeve for  
Dusting Brush Mounting  
Clip for K3 and E3  
#60238AD



Mounting Clip  
with screw for  
DART and FELIX Rosso,  
gray black  
#7097GS



Mounting Clip  
with screw for FELIX  
Onyx, black  
#7097SW



Mounting Clip  
with screw for FELIX Ice Blue,  
White, and Rose,  
white  
#7097WE



Mounting Clip  
for K and E  
Dusting Brush  
#6694GS



Mounting Clip  
for X and G  
Dusting Brush  
#5460GS

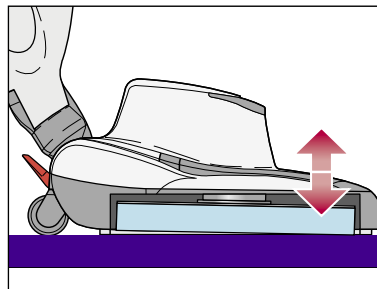
# DISCO FLOOR POLISHER HEAD

The DISCO floor polisher is lightweight, easy to operate, and has a very low cost compared to alternative polishing machines. It features a new floor-pad technology that provides a high-gloss shine to many types of hard floors without the use of water, chemicals, or polishing sands. And its drive disc has instantaneous height adjustment, along with automatic shut off caused by disc obstructions or suction blockages. The DISCO attaches to the SEBO FELIX vacuum cleaner; therefore, it has a suction capability that simultaneously removes the fine dust created during the polishing process. The DISCO is truly a revolution in hard-floor care!

FELIX Premium  
Onyx  
#9807AM  
(sold separately)  
with DISCO  
Polisher Head  
Onyx  
#9433AM



Automatic Height Adjustment of Floor Pad



## DISCO FEATURES INCLUDE:

- Quick and easy pad-change mechanism.
- Automatic height adjustment of the floor pad, in relation to the floor surface, ensures consistent and optimal performance.
- Automatic safety shut off caused by disc obstructions or suction blockages.
- Lightweight, low-cost, commercial-grade machine.
- Bumpers to protect walls, furniture, and the polisher.
- Three rubber-coated wheels to protect floor surfaces.
- Agile and easy to use, due to a highly maneuverable, 180° steering mechanism and high-quality castors.
- Convenient machine width of 13 inches and a polishing path of 11½ inches.
- The complete modular system includes a vacuum cleaner and a hard-floor polisher.
- Immediate retention of polishing dust by the suction unit.
- Reinforced drive disc that provides optimal floor contact and a speed of 2,000 rpm.

DISCO  
Onyx  
#9433AM

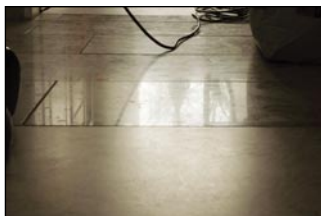


**The DISCO Floor Polisher** – This attachment introduces a new sophisticated and highly efficient floor-pad technology that produces a high-gloss effect without the use of water, chemicals, or polishing sands. The new technology achieves its results by using four different floor pads, each of which is designed to accomplish distinctly different tasks. The pads are color-coded to assure proper selection. In addition, they are highly abrasion resistant and have a life expectancy of over 100,000 square feet.

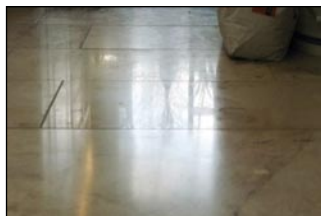
**The DISCO is usually suitable for the following types of floors:**

- PVC (coated or uncoated vinyl or vinyl composite tiles).
- Natural stone, such as granite, marble, or terrazzo.
- Acrylic or polyurethane-coated floors.
- Hardwood with oil or varnish finishes.
- Hardwood or other floors with soft-coated finishes, like wax (use the green floor pad only).

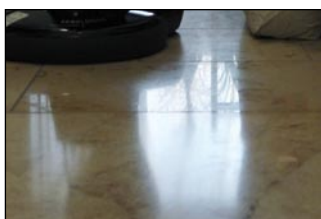
Original



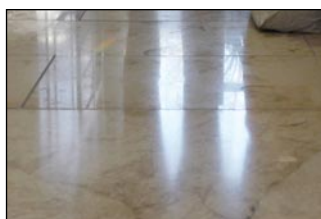
Step One: The Red Floor Pad



Step Two: The Yellow Floor Pad



Step Three: The Green Floor Pad



**The Red, Yellow, and Green Floor Pads** – These three polishing pads restore the shine of dull, scratched and scuffed, hard-floor surfaces without the use of water, chemicals, or polishing sands. The pads do the work using the following three-step procedure [soft coatings should not be present]:

- **Step One. The Red Floor Pad** – removes the deepest or most visible scratches and smooths the floor surface. Thus, it prepares the floor for the yellow pad.
- **Step Two. The Yellow Floor Pad** – restores a higher gloss finish and prepares the floor surface for the green pad.
- **Step Three. The Green Floor Pad** – creates the final gloss finish in the “three-step process,” and it is suitable for daily use to maintain the floor’s high-gloss finish. This pad is included with each new unit.

**Usually, maintaining the shine of hard floors is difficult, due to the following problems:**

- Small and medium-size, furnished, hard-floor areas do not easily accommodate typical polishers.
- Big, heavy, hard-floor polishing machines are difficult to use, require trained staff, and are expensive.
- Regular maintenance of hard floors is costly and time consuming.
- Typical hard-floor polishers have limited flexibility and mobility.
- Most hard-floor polishers cannot reach small areas.
- Correct use of floor-care chemicals and polishing sands is difficult and requires sophisticated knowledge.

The DISCO Polisher is the solution to all these problems, and it is built to commercial-quality standards!

**\* PLEASE NOTE:** Suitability of all floor surfaces should first be determined by consulting the manufacturer recommendations, and then by testing the DISCO and its three pads in an inconspicuous spot. If floor damage occurs, immediately discontinue use.

**The DISCO is NOT suitable for the following types of floors:**

- Any floor on which a shiny finish is not desired.
- Glazed, ceramic, and porcelain tiles, or porous tiles such as terracotta or slate.
- Cushioned vinyl, linoleum, laminate, and any floor types that are poorly bonded to the sub-floor.
- All floors with textured or uneven surfaces, or tiles with raised edges.
- Floors with maintenance-free coatings, floors in which acceptability of the polisher is uncertain, or when polisher use is contrary to manufacturer recommendations.



# DUO CARPET AND UPHOLSTERY DRY CLEANING SYSTEM

SEBO's DUO Cleaning System effectively removes stains and cleans large and small carpeted areas, rugs, and upholstery without using water! The DUO-P Powder and specialized Brush Machine can quickly clean a room or house full of carpeting! In addition, the DUO Daisy and Hand Brush quickly clean high-traffic areas, stairs, automobiles, RVs, and boats. This do-it-yourself, dry-cleaning system is highly effective, easy to use, saves time and money, and avoids potential carpet damage caused by some wet-cleaning methods.

The DUO Dry Cleaning System consists of the following four components, which are all sold separately:

- 1) DUO-P Carpet and Upholstery Cleaning Powder.
- 2) DUO Brush Machine for cleaning large carpeted areas.
- 3) DUO Daisy Brush for cleaning small to medium-size carpeted areas, like hallways.
- 4) DUO Hand Brush for cleaning upholstery, stairs, hard-to-reach areas, cars, and RVs.

Advantages of using the duo System are:

- Do-it-yourself, dry carpet cleaning is highly effective, easy to do, and saves time and money.
- Almost immediate use of the carpet or upholstery.
- No need to move furniture and easily cleans stairs.
- No detergent residue.
- A built-in fiber protector helps to prevent future stains.
- Avoids potential damage caused by some wet-cleaning methods.
- No carpet shrinking or mildew.

**DUO Daisy and Hand Brushes Provide Quick, Convenient Cleaning** – These items are necessities!

The Daisy is a single brush and is not motorized. However, it is the ultimate in convenience because, with its adjustable handle and very light weight, one can work in a comfortable, upright position and clean both small and medium-size carpeted areas, such as hallways or an entire room. The Daisy even offers two brush bristle options for different types of carpet: easy or aggressive. Its adjustable handle accommodates user

height preferences and enables it to be stored in small spaces. The DUO Hand Brush can be used to clean small areas of carpet and upholstery in homes, cars, boats, and RVs.





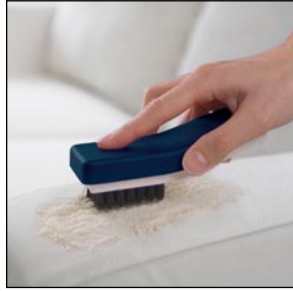
# FOUR EASY STEPS

Step One



Apply DUO-P Cleaning Powder.

Step Two



Spot-clean stubborn stains on furniture or carpet. (Older or more stubborn stains may require additional treatments.)

Step Three



Brush in the DUO-P Powder with the DUO Brush Machine, Daisy, or Hand Brush.

Step Four



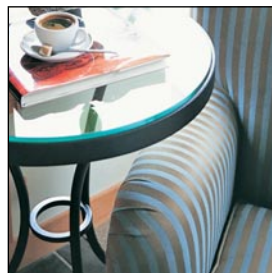
Vacuum when dry, usually after 30 to 60 minutes.

**DUO-P Powder Cleans Carpet and Upholstery** – This amazing powder cleans carpet and upholstery to like-new condition and removes even the most stubborn stains! It is made of polyurethane granules that are moistened with a cleaner and is environmentally friendly and safe to use. And, unlike other dry-cleaning powders, no “pre-spray” is needed. However, after opening, partially used packages should be tightly sealed to maintain moisture.



When the powder is worked into the carpet fibers, the moistened, sponge-like granules lift soil and stains out. Within 30 to 60 minutes, the powder is dry and is removed by vacuuming, leaving the carpet or upholstery clean, dry, and ready for use.

**Why Use Dry Cleaning?** – Some wet-cleaning methods inject water and detergent into the carpet pile under pressure, and an extractor is used to collect the liquid and dissolved soil. However, many rental and do-it-yourself machines only remove 50% of the dirty water, so much of the remaining water soaks into the pad. Often, this amount of moisture will cause deterioration of the carpet backing, and a wet carpet may take 8 to 36 hours to dry, depending on humidity. Also, carpets may re-soil quickly because of residual detergent, and spots may reappear in a short period of time, as the moisture and dissolved soil “wicks up” through the carpet fibers.



**DUO Brush Machine Cleans Large Carpeted Areas** – SEBO’s DUO Brush Machine features two spinning brushes that open the carpet pile, enabling the DUO-P Powder to clean each fiber. Weighing only 11 pounds, it is lightweight and easy to use. And with a brush-path width of 12.5 inches, a room or entire house of carpet can be quickly cleaned.

### Attachments

**Included DUO Brush Machine**

Four DUO-P Refill Packages, 1.1 lb. bags.

DUO Spot Cleaning Brush #3055HG with Mounting Clip #5352HG

### Accessories, DUO Powder and Wear Items

DUO Hand Brush #6392

DUO-P Clean Box with Built-in Spot Brush. Contains one 1.1 lb. bag. #0478AM

Refill package contains five, 1.1 lb. refill bags. Each single 1.1 lb. pack can clean up to 250 square feet of carpet. #0472AM

Brush Roller (1 Brush) #3005ER

Brush Roller (1 Brush - Soft Bristle) #3005W

DUO Daisy Brush #CD1402AM

### Wear Items

# TECHNICAL SPECIFICATIONS

AUTOMATIC X4  
and X4 BOOST



AUTOMATIC X7 Premium PET,  
X7 Premium and X8



ESSENTIAL G4 and G5



300 and 350 MECHANICAL



DART



## SPECIFICATIONS

Suction Motor	1300 Watts	1300 Watts	1300 Watts	1000 Watts	1000 Watts
Brush Motor	n/a	n/a	n/a	n/a	175 Watts
Airflow (motor rating)	103.8 CFM	100.2 CFM	103.8 CFM	106 CFM	102 CFM
Water Lift (motor rating)	92 in.	91.5 in.	92.5 in.	91 in.	90 in.
Belt Guarantee	Lifetime	Lifetime	5 Years	5 Years	5 Years
Height Adjustment	Electronic	Electronic	Manual	Manual	Manual
Suction Motor Protection	Electronic	Electronic	Electronic	Mechanical	Thermal
Bag Capacity	1.4 gal.	1.4 gal.	1.4 gal.	1.4 gal.	.92 gal.
Handle Weight	1.5 lbs.	1.5 lbs.	1.5 lbs.	1.5 lbs.	3 lbs.
Body Weight	16.7 lbs.	17.3/17.5 lbs.	16.9/17.1 lbs.	19.5/20 lbs.	15.4 lbs.
Variable Suction Control	No	No	No	No	No
Bare Floor Cleaning	Yes	Yes	Yes	Yes	Yes
Dusting Brush Included	Yes	Yes	Yes	Yes	Yes
Cleaning Wand Included	Yes	Yes	Yes	Yes	No
Cord Length/Range	40 ft.	40 ft.	40 ft.	39 ft.	31 ft.
Power Head Width	12 in.	12 in./15 in.	12 in./15 in.	12 in./14 in.	12 in.
Hose Length	6 ft.	6 ft.	6 ft.	6 ft.	6 ft.
S-class Filtration	Yes	Yes	Yes	Yes	Yes
Adjustable Handle	No	No	No	No	No
HEPA Filtration Available	Yes	Yes	Yes	Yes	No
Use Without Power Head	No	No	No	No	Yes
Brush Height Settings	Automatic	Automatic	4	4	4
Brush Wear Compensation	Automatic	Automatic	Manual	Manual	Manual
Brush Speed	3100 RPM	3100 RPM	3100 RPM	3200 RPM	2700 RPM
Sound Level	69 dBA	69 dBA	69 dBA	76 dBA	68 dBA



FELIX Premium



AIRBELT D4 Premium and D1 Turbo



AIRBELT E3 Premium, E2 Turbo and E1 Kombi



AIRBELT K3 Premium, K2 Kombi and K2 Turbo



DUO Brush Machine

**SPECIFICATIONS**

Suction Motor	1000 Watts	1250 Watts	1200 Watts	1250 Watts	n/a
Brush Motor	175 Watts	175 Watts	175 Watts	175 Watts	200 Watts
Airflow (motor rating)	102 CFM	120 CFM	120 CFM	120 CFM	n/a
Water Lift (motor rating)	90 in.	95 in.	95 in.	95 in.	n/a
Belt Guarantee	5 Years	5 Years	5 Years	5 Years	5 Years
Height Adjustment	Manual	Manual	Manual	Manual	n/a
Suction Motor Protection	Thermal	Thermal	Thermal	Thermal	n/a
Bag Capacity	.92 gal.	1.5 gal.	.92 gal.	.8 gal.	n/a
Handle Weight	3 lbs.	1.5 lbs.	1.5 lbs.	1.5 lbs.	0.8 lbs.
Body Weight	15.4 lbs.	15.9 lbs.	11.4 lbs.	12 lbs.	11 lbs.
Variable Suction Control	Yes	Yes	Yes	Yes	n/a
Bare Floor Cleaning	Yes	Yes	Yes	Yes	n/a
Dusting Brush Included	Yes	Yes	Yes	Yes	n/a
Cleaning Wand Included	No	Yes	Yes	Yes	n/a
Cord Length/Range	31 ft.	40 ft./52 ft.	25 ft./37 ft.	25 ft./37 ft.	40 ft.
Power Head Width	12 in.	12 in.	12 in.	12 in.	14 in.
Hose Length	6 ft.	7 ft.	7 ft.	7 ft.	n/a
S-class Filtration	Yes	Yes	Yes	Yes	n/a
Adjustable Handle	Yes	Yes	Yes	Yes	No
HEPA Filtration Available	No	No	No	Yes	n/a
Use Without Power Head	Yes	Yes	Yes	Yes	n/a
Brush Height Settings	4	4	4	4	n/a
Brush Wear Compensation	Manual	Manual	Manual	Manual	No
Brush Speed	2700 RPM	2700 RPM	2700 RPM - E3	2700 RPM - K3	400 RPM
Sound Level	68 dBA	63 dBA	E1,2 58 dBA/E3 62 dBA	63 dBA	n/a